

THE CITY OF SUMMIT

N E W J E R S E Y

City Hall 512 Springfield Avenue Summit NJ 07901

John Linson
City Forester
Department of Community Services (DCS)

Telephone: 908-598-2175
Fax: 908-273-1214
Email: trees@cityofsummit.org

Memorandum

To: Stephanie Soulios, Land Use Assistant, Board Secretary – Planning & Zoning

From: John Linson, Forester

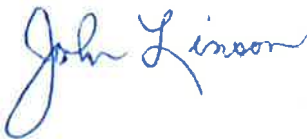
RE: 14 Franklin Pl – ZB-22-2170

March 17th, 2023

CC: Christa Anderson, Zoning Officer

I met with Sharon Kou, the property owner, in regard to the 41” diameter Oak tree that I had hoped to preserve. Unfortunately, due to the configuration of the lot the tree falls within the building envelope and they are not able to re-configure the garage to accommodate the tree.

Sincerely,



John Linson
City Forester



| NO. | DATE | DESCRIPTION |
|-----|----------|-------------------------|
| 1 | 07/15/17 | ISSUED FOR CONSTRUCTION |
| 2 | 07/15/17 | ISSUED FOR CONSTRUCTION |
| 3 | 07/15/17 | ISSUED FOR CONSTRUCTION |
| 4 | 07/15/17 | ISSUED FOR CONSTRUCTION |
| 5 | 07/15/17 | ISSUED FOR CONSTRUCTION |
| 6 | 07/15/17 | ISSUED FOR CONSTRUCTION |
| 7 | 07/15/17 | ISSUED FOR CONSTRUCTION |
| 8 | 07/15/17 | ISSUED FOR CONSTRUCTION |
| 9 | 07/15/17 | ISSUED FOR CONSTRUCTION |
| 10 | 07/15/17 | ISSUED FOR CONSTRUCTION |

ISSUED FOR CONSTRUCTION

STAB DEVELOPMENT LLC
 245 Main Street, Suite 110
 Chester, NJ 07930
 609.399.1111

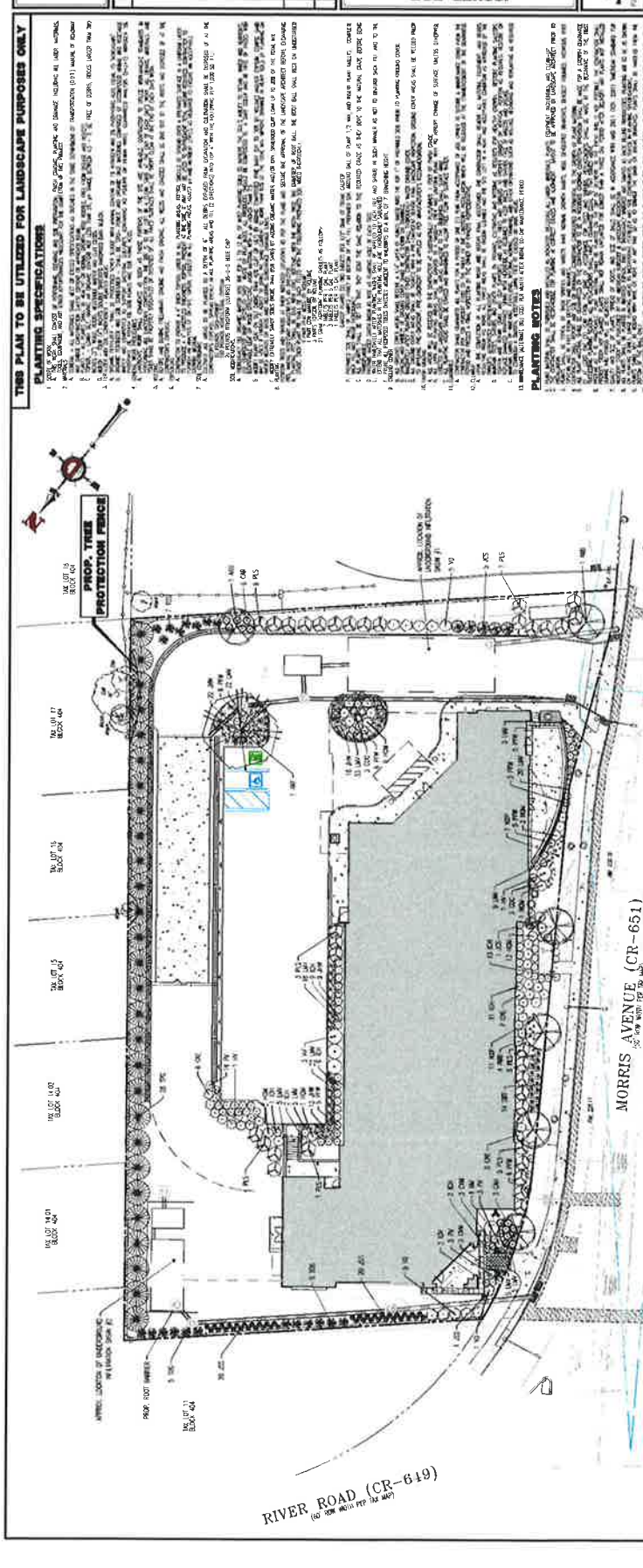
DYNAMIC ENGINEERING
 LANDSCAPE ARCHITECTURE
 245 Main Street, Suite 110
 Chester, NJ 07930
 609.399.1111

STEPHEN SCHWARTZ
 PROFESSIONAL LANDSCAPE ARCHITECT
 609.399.1111

MARLA ROLLER
 LEAD PROFESSIONAL LANDSCAPE ARCHITECT
 609.399.1111

LANDSCAPE PLAN

DATE: 07/15/17
 PROJECT: 17-001
 SHEET NO.: 8

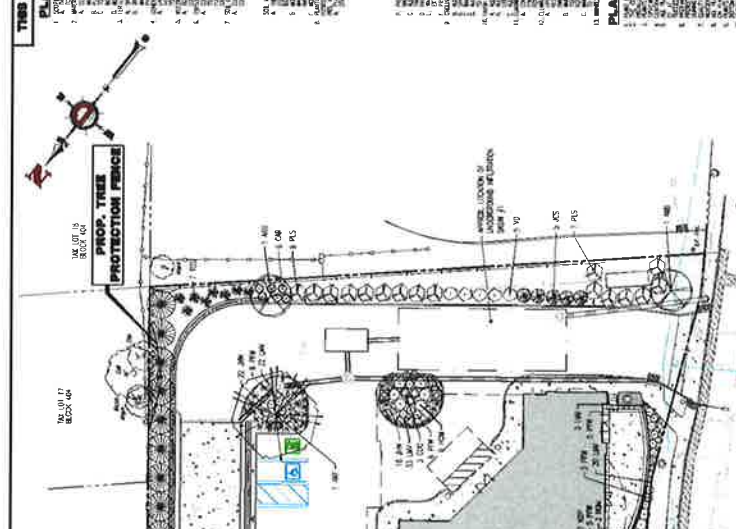


PLANTING SPECIFICATIONS

1. ALL PLANTING SHALL BE INSTALLED IN ACCORDANCE WITH THE FOLLOWING SPECIFICATIONS:
 a. ALL PLANTS SHALL BE WELL ESTABLISHED AND FREE FROM DISEASE AND PESTS.
 b. ALL PLANTS SHALL BE PLANTED AT THE PROPER DEPTH AND SPACING.
 c. ALL PLANTS SHALL BE WATERED AND MULCHED AS NECESSARY.
 d. ALL PLANTS SHALL BE MAINTAINED AND PRUNED AS NECESSARY.

PLANTING NOTES

1. ALL PLANTS SHALL BE PLANTED IN ACCORDANCE WITH THE FOLLOWING NOTES:
 a. ALL PLANTS SHALL BE PLANTED AT THE PROPER DEPTH AND SPACING.
 b. ALL PLANTS SHALL BE WATERED AND MULCHED AS NECESSARY.
 c. ALL PLANTS SHALL BE MAINTAINED AND PRUNED AS NECESSARY.



DISJOINTED TREE PLANTING DETAIL

1. ALL PLANTS SHALL BE PLANTED IN ACCORDANCE WITH THE FOLLOWING SPECIFICATIONS:
 a. ALL PLANTS SHALL BE WELL ESTABLISHED AND FREE FROM DISEASE AND PESTS.
 b. ALL PLANTS SHALL BE PLANTED AT THE PROPER DEPTH AND SPACING.
 c. ALL PLANTS SHALL BE WATERED AND MULCHED AS NECESSARY.
 d. ALL PLANTS SHALL BE MAINTAINED AND PRUNED AS NECESSARY.

EVERGREEN TREE PLANTING DETAIL

1. ALL PLANTS SHALL BE PLANTED IN ACCORDANCE WITH THE FOLLOWING SPECIFICATIONS:
 a. ALL PLANTS SHALL BE WELL ESTABLISHED AND FREE FROM DISEASE AND PESTS.
 b. ALL PLANTS SHALL BE PLANTED AT THE PROPER DEPTH AND SPACING.
 c. ALL PLANTS SHALL BE WATERED AND MULCHED AS NECESSARY.
 d. ALL PLANTS SHALL BE MAINTAINED AND PRUNED AS NECESSARY.

BIORETENTION ROOT BARRIER DETAIL

1. ALL PLANTS SHALL BE PLANTED IN ACCORDANCE WITH THE FOLLOWING SPECIFICATIONS:
 a. ALL PLANTS SHALL BE WELL ESTABLISHED AND FREE FROM DISEASE AND PESTS.
 b. ALL PLANTS SHALL BE PLANTED AT THE PROPER DEPTH AND SPACING.
 c. ALL PLANTS SHALL BE WATERED AND MULCHED AS NECESSARY.
 d. ALL PLANTS SHALL BE MAINTAINED AND PRUNED AS NECESSARY.

LANDSCAPE SCHEDULE

| SYM | QTY | DESCRIPTION | SIZE | UNITS |
|-----|-----|-----------------------|-----------------|-------|
| 1 | 6 | ACER FRAXINUS 'BENAL' | 3 1/2" x 7" CAL | 6-49 |
| 2 | 1 | ACER FRAXINUS 'BENAL' | 3 1/2" x 7" CAL | 6-49 |
| 3 | 1 | ACER FRAXINUS 'BENAL' | 3 1/2" x 7" CAL | 6-49 |
| 4 | 1 | ACER FRAXINUS 'BENAL' | 3 1/2" x 7" CAL | 6-49 |
| 5 | 1 | ACER FRAXINUS 'BENAL' | 3 1/2" x 7" CAL | 6-49 |
| 6 | 1 | ACER FRAXINUS 'BENAL' | 3 1/2" x 7" CAL | 6-49 |
| 7 | 1 | ACER FRAXINUS 'BENAL' | 3 1/2" x 7" CAL | 6-49 |
| 8 | 1 | ACER FRAXINUS 'BENAL' | 3 1/2" x 7" CAL | 6-49 |
| 9 | 1 | ACER FRAXINUS 'BENAL' | 3 1/2" x 7" CAL | 6-49 |
| 10 | 1 | ACER FRAXINUS 'BENAL' | 3 1/2" x 7" CAL | 6-49 |
| 11 | 1 | ACER FRAXINUS 'BENAL' | 3 1/2" x 7" CAL | 6-49 |
| 12 | 1 | ACER FRAXINUS 'BENAL' | 3 1/2" x 7" CAL | 6-49 |
| 13 | 1 | ACER FRAXINUS 'BENAL' | 3 1/2" x 7" CAL | 6-49 |
| 14 | 1 | ACER FRAXINUS 'BENAL' | 3 1/2" x 7" CAL | 6-49 |
| 15 | 1 | ACER FRAXINUS 'BENAL' | 3 1/2" x 7" CAL | 6-49 |
| 16 | 1 | ACER FRAXINUS 'BENAL' | 3 1/2" x 7" CAL | 6-49 |
| 17 | 1 | ACER FRAXINUS 'BENAL' | 3 1/2" x 7" CAL | 6-49 |
| 18 | 1 | ACER FRAXINUS 'BENAL' | 3 1/2" x 7" CAL | 6-49 |
| 19 | 1 | ACER FRAXINUS 'BENAL' | 3 1/2" x 7" CAL | 6-49 |
| 20 | 1 | ACER FRAXINUS 'BENAL' | 3 1/2" x 7" CAL | 6-49 |
| 21 | 1 | ACER FRAXINUS 'BENAL' | 3 1/2" x 7" CAL | 6-49 |
| 22 | 1 | ACER FRAXINUS 'BENAL' | 3 1/2" x 7" CAL | 6-49 |
| 23 | 1 | ACER FRAXINUS 'BENAL' | 3 1/2" x 7" CAL | 6-49 |
| 24 | 1 | ACER FRAXINUS 'BENAL' | 3 1/2" x 7" CAL | 6-49 |
| 25 | 1 | ACER FRAXINUS 'BENAL' | 3 1/2" x 7" CAL | 6-49 |
| 26 | 1 | ACER FRAXINUS 'BENAL' | 3 1/2" x 7" CAL | 6-49 |
| 27 | 1 | ACER FRAXINUS 'BENAL' | 3 1/2" x 7" CAL | 6-49 |
| 28 | 1 | ACER FRAXINUS 'BENAL' | 3 1/2" x 7" CAL | 6-49 |
| 29 | 1 | ACER FRAXINUS 'BENAL' | 3 1/2" x 7" CAL | 6-49 |
| 30 | 1 | ACER FRAXINUS 'BENAL' | 3 1/2" x 7" CAL | 6-49 |
| 31 | 1 | ACER FRAXINUS 'BENAL' | 3 1/2" x 7" CAL | 6-49 |
| 32 | 1 | ACER FRAXINUS 'BENAL' | 3 1/2" x 7" CAL | 6-49 |
| 33 | 1 | ACER FRAXINUS 'BENAL' | 3 1/2" x 7" CAL | 6-49 |
| 34 | 1 | ACER FRAXINUS 'BENAL' | 3 1/2" x 7" CAL | 6-49 |
| 35 | 1 | ACER FRAXINUS 'BENAL' | 3 1/2" x 7" CAL | 6-49 |
| 36 | 1 | ACER FRAXINUS 'BENAL' | 3 1/2" x 7" CAL | 6-49 |
| 37 | 1 | ACER FRAXINUS 'BENAL' | 3 1/2" x 7" CAL | 6-49 |
| 38 | 1 | ACER FRAXINUS 'BENAL' | 3 1/2" x 7" CAL | 6-49 |
| 39 | 1 | ACER FRAXINUS 'BENAL' | 3 1/2" x 7" CAL | 6-49 |
| 40 | 1 | ACER FRAXINUS 'BENAL' | 3 1/2" x 7" CAL | 6-49 |
| 41 | 1 | ACER FRAXINUS 'BENAL' | 3 1/2" x 7" CAL | 6-49 |
| 42 | 1 | ACER FRAXINUS 'BENAL' | 3 1/2" x 7" CAL | 6-49 |
| 43 | 1 | ACER FRAXINUS 'BENAL' | 3 1/2" x 7" CAL | 6-49 |
| 44 | 1 | ACER FRAXINUS 'BENAL' | 3 1/2" x 7" CAL | 6-49 |
| 45 | 1 | ACER FRAXINUS 'BENAL' | 3 1/2" x 7" CAL | 6-49 |
| 46 | 1 | ACER FRAXINUS 'BENAL' | 3 1/2" x 7" CAL | 6-49 |
| 47 | 1 | ACER FRAXINUS 'BENAL' | 3 1/2" x 7" CAL | 6-49 |
| 48 | 1 | ACER FRAXINUS 'BENAL' | 3 1/2" x 7" CAL | 6-49 |
| 49 | 1 | ACER FRAXINUS 'BENAL' | 3 1/2" x 7" CAL | 6-49 |
| 50 | 1 | ACER FRAXINUS 'BENAL' | 3 1/2" x 7" CAL | 6-49 |

PERMANENT/GROUND COVER PLANTING DETAIL

1. ALL PLANTS SHALL BE PLANTED IN ACCORDANCE WITH THE FOLLOWING SPECIFICATIONS:
 a. ALL PLANTS SHALL BE WELL ESTABLISHED AND FREE FROM DISEASE AND PESTS.
 b. ALL PLANTS SHALL BE PLANTED AT THE PROPER DEPTH AND SPACING.
 c. ALL PLANTS SHALL BE WATERED AND MULCHED AS NECESSARY.
 d. ALL PLANTS SHALL BE MAINTAINED AND PRUNED AS NECESSARY.

BIORETENTION ROOT BARRIER DETAIL

1. ALL PLANTS SHALL BE PLANTED IN ACCORDANCE WITH THE FOLLOWING SPECIFICATIONS:
 a. ALL PLANTS SHALL BE WELL ESTABLISHED AND FREE FROM DISEASE AND PESTS.
 b. ALL PLANTS SHALL BE PLANTED AT THE PROPER DEPTH AND SPACING.
 c. ALL PLANTS SHALL BE WATERED AND MULCHED AS NECESSARY.
 d. ALL PLANTS SHALL BE MAINTAINED AND PRUNED AS NECESSARY.

EVERGREEN TREE PLANTING DETAIL

1. ALL PLANTS SHALL BE PLANTED IN ACCORDANCE WITH THE FOLLOWING SPECIFICATIONS:
 a. ALL PLANTS SHALL BE WELL ESTABLISHED AND FREE FROM DISEASE AND PESTS.
 b. ALL PLANTS SHALL BE PLANTED AT THE PROPER DEPTH AND SPACING.
 c. ALL PLANTS SHALL BE WATERED AND MULCHED AS NECESSARY.
 d. ALL PLANTS SHALL BE MAINTAINED AND PRUNED AS NECESSARY.

DISJOINTED TREE PLANTING DETAIL

1. ALL PLANTS SHALL BE PLANTED IN ACCORDANCE WITH THE FOLLOWING SPECIFICATIONS:
 a. ALL PLANTS SHALL BE WELL ESTABLISHED AND FREE FROM DISEASE AND PESTS.
 b. ALL PLANTS SHALL BE PLANTED AT THE PROPER DEPTH AND SPACING.
 c. ALL PLANTS SHALL BE WATERED AND MULCHED AS NECESSARY.
 d. ALL PLANTS SHALL BE MAINTAINED AND PRUNED AS NECESSARY.