

★ **1 RULE**



**PARKING
MATTERS**



I ♥ 2 PARK

Mid-Atlantic
Foundation for Safety
and Education

How to Park:

**The Must-
Read
Manual for
Teen Drivers**



IPI INTERNATIONAL
PARKING
INSTITUTE

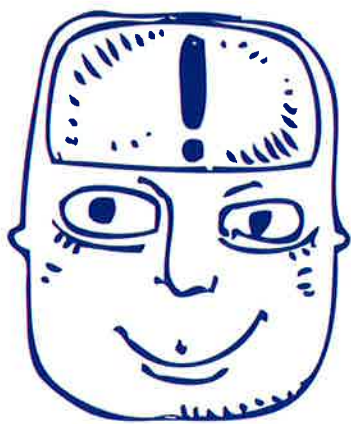


Welcome to Parking Ed!

We know – you take driver's education to learn the basic skills you need to get your license. But something is missing in this picture. As much as you drive your car, it's probably parked more than 90% of the time! Parking is important to master because:

- 14% of all collisions resulting in insurance claims occur in parking lots, according to a study of vehicles brought to claims centers in a major U.S. metropolitan area.¹
- 55% of non-roadway collisions between pedestrians and vehicles occur in parking lots, according to a study of hospital emergency room data.²
- 52% of injury accidents that occur when a car is backing up happen in non-residential parking areas.³

In this manual, we've provided guidelines to help you become competent, confident, and careful about parking.



WHAT'S inside

8 Parking Basics	3
The Dirty Dozen: Parking No-Nos	4
Curb Colors: What They Mean	4
Avoiding a Pain in the Glass	5
Disabled Parking Spaces	5
Parking Tickets = Chaos Prevention	6
Is Free Parking Free?	6
7 Ways to Avoid Getting a Parking Ticket.....	7
Behind the Wheel: How to Park	8-10
Parking Goes High Tech – and Green	11
Driving for Life	11

IPI INTERNATIONAL
PARKING
INSTITUTE

parking.org

¹ Insurance Institute for Highway Safety

² Federal Highway Administration

³ Insurance Institute for Highway Safety

8

PARKING BASICS

Obey parking signs. Park only where it is legal.

Park away from traffic. When parking along a roadway, park as far from traffic as possible.

Cuddle the curb. When there is a curb, park as close to it as possible.

Use only one space. Park inside the lines.

Check your gear. Before exiting, ensure your car is in the right gear. Automatic cars: Leave it in PARK with the emergency brake on, particularly if parked on a hill. Manual cars: Put it in REVERSE if facing downhill; FIRST GEAR if facing uphill.

Exit expertly. Check your mirrors for traffic, passing cyclists, or pedestrians before stepping out of your parked car. Take the car keys, lock the doors, and place valuables out of sight. (Does your car beep to signal it's locked? Be courteous and check manually if the beep is disruptive based on the time and place where you are parking.)

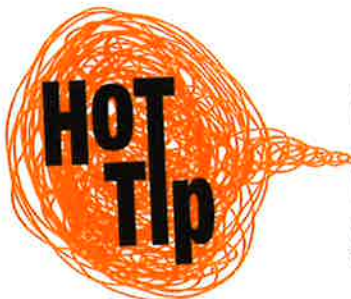
Note your location. Remember where you parked so you can find your car when you return.

Remember your back-up plan. Backing up causes one-fourth of all vehicle collisions, resulting in 500 deaths and 15,000 injuries a year, according to the National Safety Council. Do not rely on your rearview mirror; most vehicles have a blind zone behind them that measures approximately 7 to 8 feet wide and 20 to 30 feet long. Take the time to turn and look behind you in all directions, and proceed cautiously. Fasten your seat belt before you leave that parking space. You can be ticketed for driving—or simply backing up—without a seat belt.



The universal sign for parking

Read the signs. For safety's sake, whether looking for signs to determine whether it's legal to park, or navigating your way through a parking garage to determine where to exit, read signs carefully and pay attention to wayfinding arrows and guidance systems.



Use your phone to snap a photo of the section sign nearest to your car (example: P3, Row K)

THE DIRTY DOZEN: Parking **NO-NOS!**

You may be tempted to park illegally for just a minute sometimes, but chances are you will find a ticket underneath your windshield wiper when you return. Never park:



1. In **front of "No Parking"** signs.
2. Beside another parked vehicle where your car is impeding traffic flow (**double parking**).
3. In a parking space **reserved for people with disabilities**.
4. On **crosswalks or sidewalks**.
5. Next to **curbs that are painted yellow or red**.
6. In a **travel lane**.
7. In such a way that **you block or create a hazard** for other vehicles in a designated traffic lane.
8. Within 15* feet of a **fire hydrant**.
9. Within 15* feet of an **intersection**.



10. Within 15* feet of the **entrance to a fire, ambulance, or rescue squad station**.
11. Within 500* feet of **where fire trucks or equipment are stopped** while answering an alarm.
12. Within 50* feet of a **railroad crossing**.

** Distances vary by state. Consult your local Department of Motor Vehicles or your driver education teacher for correct distances in your state.*



** Not all states adhere to these curb colors*

AVOIDING A PAIN IN THE GLASS

You steer into a space in front of the store and for a second, your attention is split between parking and listening to a passenger. You confuse the gas pedal for the brake. Your car lurches forward, and you stomp on the gas, trying to stop the car. Before you can correct it, you've popped over the curb and smashed into the convenience store.

This may sound crazy, but it happens a lot—week after week, all around the country, to drivers of all ages (just Google “storefront crash”). Consider these suggestions for keeping your foot and pedals in sync:

1. LOOK. How big are your pedals? How much space is between them? Close your eyes and form a mental picture of where the pedals are placed.

2 FEEL. You obviously can't look down while parking, so help your right foot and leg develop “muscle memory” about the position and feel of the pedals. Do this with the engine off, the emergency brake engaged, and the automatic transmission gearshift in park (or neutral if it's a manual transmission). Lightly place your right foot over each pedal, one at a time (don't press on the gas—just tap it so you can feel the contact between your foot and the pedal).

3 WEAR SAFE SHOES. Your footwear affects your ability to operate a vehicle. Flip-flops are unsafe for driving. They slide around on your foot and pivot sideways while your foot moves across the pedals. Take along a pair of comfortable, well-fitting, flat-soled shoes so you can easily swap out your flip-flops, hiking boots, or other footwear that could interfere with safe pedal operation.

Don't text while walking through a parking lot. Pay attention!

**HOT
Tip**

PARKING SPACES FOR PEOPLE WITH DISABILITIES



Only drivers who have parking permits or license plates for people with disabilities may stop, stand, or park in these designated spots. Permits and plates must be obtained from the Department of Motor Vehicles and require documentation confirming that the applicant qualifies. People with healing injuries who are disabled for limited periods of time are given temporary permits with expiration dates.

If you stop, stand, or park in a parking space reserved for people with disabilities and don't have a permit, you risk a hefty fine (varying from state to state, but generally around \$250). This fine also applies to drivers who use permits or license plates that are not theirs when the person who owns the permit is not in the car.

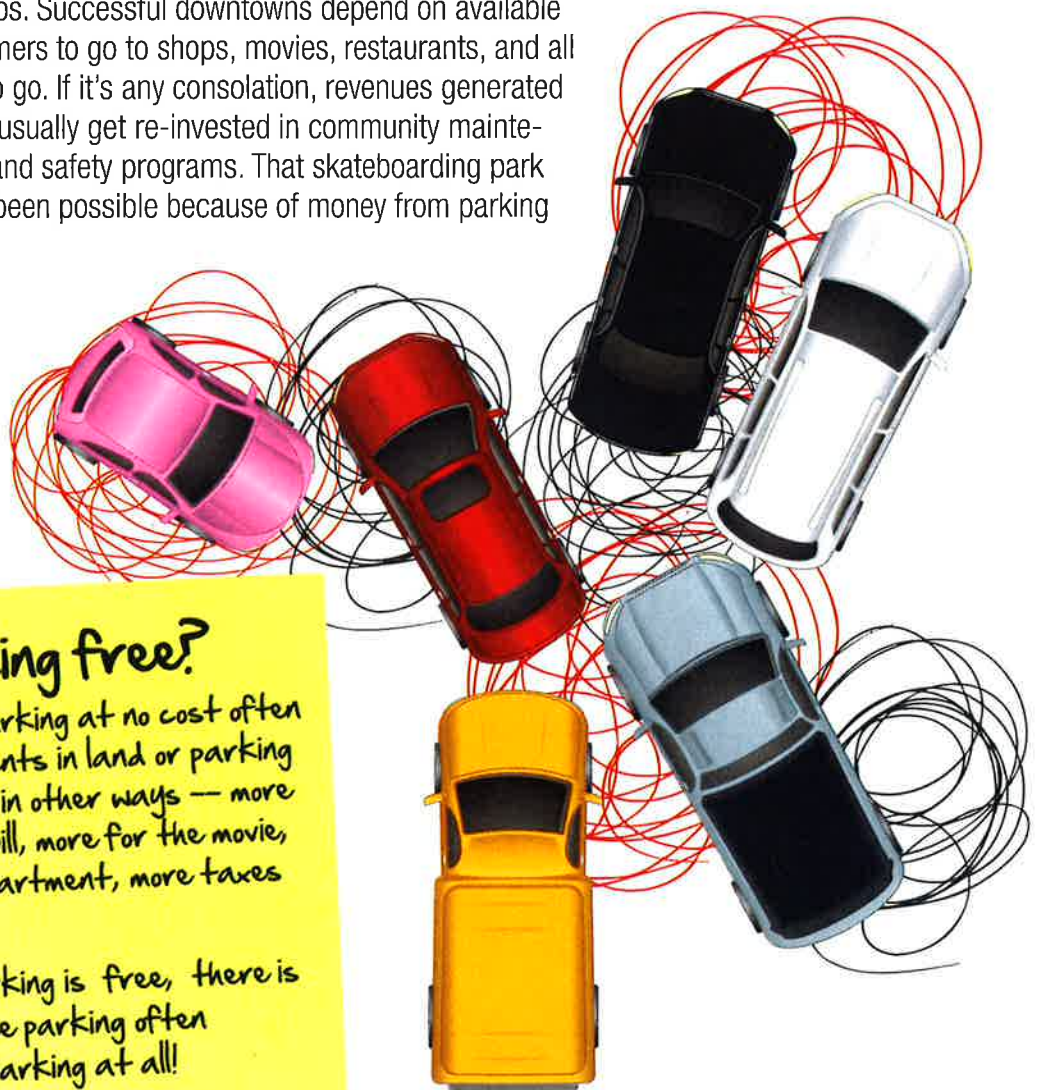


PARKING TICKETS = CHAOS PREVENTION



Contrary to public opinion, the goal of nearly every municipal parking authority is not to see how many tickets their officers can write, but to provide available parking in a safe environment for pedestrians and drivers.

A town in England once suspended all parking tickets and rules as a trial. **The result: Chaos.** Imagine if cars could be parked anywhere, blocking traffic, making roads impassable. Not good, right? Parking rules and regulations are important and enforcement of those rules are needed to prevent chaos. Successful downtowns depend on available parking to allow customers to go to shops, movies, restaurants, and all the places they want to go. If it's any consolation, revenues generated by parking ticket fines usually get re-invested in community maintenance, beautification, and safety programs. That skateboarding park you love? It may have been possible because of money from parking fines.



Is free parking free?

Places that offer parking at no cost often offset their investments in land or parking garages by charging in other ways — more on your restaurant bill, more for the movie, more rent for the apartment, more taxes from the city.

In addition, when parking is free, there is less turnover, so free parking often means no available parking at all!

Right-priced, well-planned parking means there's always some available spaces. Sounds fair, right?

7

WAYS TO AVOID GETTING A PARKING TICKET



1 Pay the Meter. This one is simple: just pay. Don't think you can flip on the flashers to avoid a ticket because you are only going to be gone for one minute.

2 Pay by Phone. Many municipalities offer meters or pay stations that allow you to pay by credit card, with a smart phone, or with rechargeable parking smartcards. Most pay-by-phone apps will even send a text reminder when your meter is about to expire.

3 Stash Quarters. Though many cities are adopting high-tech ways to make finding and paying for parking easier, keeping a roll of quarters in your glove compartment is a good idea.

4 Garage It. Parking garages are designed for long-term parking. If you are staying longer than several hours, parking in a garage is less expensive than getting a ticket.

5 Use Public Transportation. Walking or taking the bus or train is an easy way to avoid tickets. Using mass transit is good for the planet, too.

6 Look around. Before leaving your vehicle, check for "No Parking" signs. Also, be sure you are not blocking a fire hydrant, illegally occupying a handicapped spot, or parked on a pedestrian crosswalk.

7 Appeal. Most municipal parking authorities have a process that allows citizens to appeal parking tickets.

If you park in a metered spot, note the expiration time and plan to return a few minutes early, setting an alarm as a reminder. Some on-street spaces now offer the ability to extend your parking time remotely through your mobile phone.

**Hot
Tip**

HEARTBREAKING NIGHTMARES

Dozens of children and pets die each year because they are left unattended in parked vehicles. The temperature inside the vehicle can quickly soar above 110 degrees. Never leave a person or animal in a parked car; put your purse or cell phone in the backseat (out of their reach) to help you remember.



BEHIND THE WHEEL: HOW TO PARK

Whether you are in a lot, parking garage, or on the street, there are only three kinds of parking: perpendicular (at a 90-degree angle), angle, and parallel. Each mode involves a few maneuvers that at first can seem intimidating, but, over time, will become automatic.



**HOT
Tip**

If you have a choice, pulling into a parking spot on your left gives you more room to maneuver.

Perpendicular Parking: Pulling In

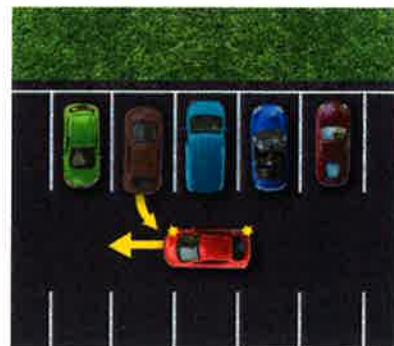
1. Position your vehicle 5 to 6 feet away from the space.
2. Move forward until your body is aligned with the first pavement line.
3. Turn the wheel rapidly left or right, controlling your speed. (A good time to turn is when the back of your front seat is aligned with the center of the parking space.)
4. Steer toward an imaginary target in the center of the space and straighten your wheels.
5. Position your front bumper 3 to 6 inches from the curb or end of the space.



Parking images courtesy of AAA How to Drive: The Beginning Driver's Manual.

Perpendicular Parking: Backing Out

1. Place your foot on the brake, signal your intention, shift to reverse, and look over your shoulder through your rear window.
2. Back up until your windshield is even with the bumper of the vehicle located next to you on the side closest to the direction where you want to go, and begin turning the steering wheel in the direction you want to go.
3. Monitor your front bumper on the opposite side of the direction you are turning.
4. Stop when your front bumper clears the back of the vehicle by several feet.
5. Shift into drive and proceed into traffic.

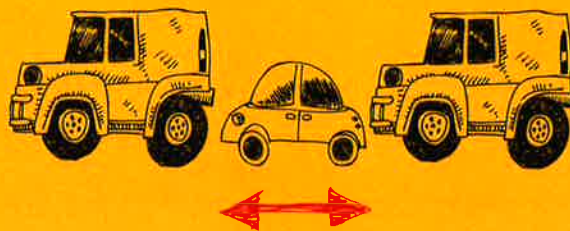


**HOT
Tip**
SUPER

Backing into parking spaces takes some practice, but soon can become second nature. Why is this worth mastering? Because it's safer to exit into traffic going forward rather than in reverse, and better for the environment (it takes more gas to back up a cold engine than a warm one).

BOXED IN?

This often can be avoided if you allow adequate space between you and the car in front of you when you parallel park, but occasionally, you may find yourself in a tight spot. If someone is available to help you, have them guide you as you make many tiny back-and-forth motions, turning the wheel as far as you can each time without touching the other cars.



Angle Parking: Pulling In

1. Signal your intention and position your vehicle 3 to 4 feet from the space in which you plan to park.
2. Move forward until your steering wheel is aligned with the first pavement line.
3. Visually locate the middle of the parking space and turn the wheel sharply at a slow, controlled speed.
4. Steer toward the center of the space.
5. Straighten your wheels and stop when your front bumper is 3 to 6 inches from the curb or end of the space.



Angle Parking: Backing Out

1. Place your foot on the brake, signal your intention, shift into reverse, and scan your path of travel.
2. Back up until your vehicle's front seat is even with the bumper of the vehicle on the turning side, and begin turning the steering wheel in the direction you want the rear to go.
3. Monitor your front bumper on the opposite side of the direction in which you are turning.
4. When your front bumper clears the back of the vehicle by several feet, stop.
5. Shift into drive and proceed into traffic.



PARKING ON A HILL

There is a gravity issue to be aware of when parking on a hill, so you need to take a few extra precautions. If you have an automatic transmission, double check to be sure it is in park. If you have a manual transmission, be sure you place the vehicle in reverse or first gear. In either case, it's especially important to use the parking brake. To further ensure that your vehicle does not roll into traffic, turn the front wheels toward the curb when facing downhill, and away from the curb when facing uphill. (In many states, you can be ticketed for not doing this.)



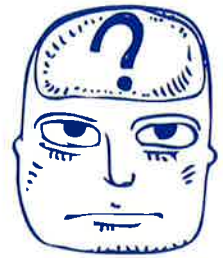
Parking Downhill



Parking Uphill

Parallel Parking

This maneuver can be more intimidating than the others; in fact, some people drive out of their way to avoid having to parallel park. New drivers are unsure whether there is enough space to easily clear the vehicles in front and behind. If you follow a few simple rules and practice (between cones or large boxes—you can use PVC pipe to add height to a small box), you can master this!



In every case:

- Select a space that is at least six feet longer than your car.
- Be sure to warn cars behind you of your intent. Flash your brake lights and put on your turn signal. On narrow streets, they may not be able to pass until you have gotten into the spot. (Likewise, if you are behind a car that is signaling to parallel park, either pass right away or give them plenty of room to operate.)
- Keep your foot on the brake pedal to control your speed. The gas is not needed.
- If you are uncomfortable with your angle of approach, pull back out and start over; do not force it.
- When parallel parking on the left side of a one way street (or behind a car doing the same), take extra care, as people are generally unfamiliar with this process.

The S Method of Parallel Parking

- 1 Pull up parallel to the car in front of you, 2 to 3 feet from it.
- 2 Shift into reverse.
- 3 Check traffic and path of travel, and back slowly, steering all the way to the left or right as appropriate; stop when the steering wheel is in line with the rear bumper and your car is at a 45-degree angle.
- 4 Turn your wheels all the way in the opposite direction and back up slowly. Make sure you glance quickly at the front and the rear of your vehicle until you straighten the wheels.
- 5 Center the vehicle into the space. Your wheels should be 6 to 12 inches from the curb.



Exiting a Parallel Spot

1. Back up straight as far as you can without touching the bumper of the car behind you.
2. Check traffic, signal your intention, and shift into drive.
3. Turn your wheels all the way to the left and move forward slowly.
4. Begin straightening your wheels when your front seat is even with the back of the bumper of the car in front of you.
5. Focus on the target in the center of your path of travel and proceed into traffic.

Reverse or Back-in Angle Parking

Many cities are starting to use reverse or back-in angle parking. It's easier than parallel parking and studies show it is also safer because drivers have better visibility when they exit the spot, car trunks are against the curb so it's safer for loading and unloading, and car doors open in such a way that children naturally move toward the sidewalk instead of the street. In fact, cities with this type of parking report fewer parking-related crashes. Back-in angle parking is a three-step process:

1. Signal a right turn to warn other drivers.
2. Pull past the parking spot and stop.
3. Reverse into the parking spot.



Always park between the lines!

PARKING GOES HIGH TECH - and Green

Cruising around looking for a parking spot wastes fuel and produces unnecessary carbon emissions that are bad for the environment. New parking technologies are reducing the amount of time it takes for drivers to enter and exit a lot and locate a parking spot.

Some cool parking innovations:

- Mobile apps are making it possible to find, reserve, and pay for parking by phone. There are even apps that give you a reminder call when your meter is about to expire.
- Automatic Vehicle Identification (AVI) refers to a system that enables automatic identification of a vehicle when it enters a parking facility, so it can be authorized and permitted to enter and exit.
- Single-space monitoring systems that make it easier to find and navigate to available parking spaces. Digital displays tell drivers how many spots are available on each parking level and direct them to their locations.
- Websites and social media that help drivers find parking spaces quickly and easily. These include systems that use Twitter, Facebook, instant messages, text messages, RSS, and emails.
- An increasing number of automobiles now come with active parking technology that guides drivers into parallel parking spaces.



PARKING: "Eyes & Ears of a Community"



Did you know many parking enforcement officers and front-line parking attendants are trained to play a part in counter-terrorism by observing, assessing, and reporting suspicious activity? Because they patrol neighborhoods, parking enforcers provide a safe presence and often are the first to call 9-1-1 in cases of emergency or fire. Many have been cited as local heroes who have saved lives in their communities.



DRIVING FOR LIFE

Let's face it: driving is risky business. Each year more than 30,000 people are killed and more than 2 million are injured as a result of vehicle crashes. Driving is probably the most dangerous thing many of us will ever do.

If you are reading this, you're way ahead. Keep it up! Just as pilots brush up on their skills and office workers are sent for training on new programs or equipment, drivers should renew their skills and knowledge regularly through additional training. Defensive driving and driver improvement programs offer the latest training methods, review motor vehicle laws, and provide risk-reducing driving and parking tips and techniques to help keep you safe behind the wheel.

Many states offer drivers incentives such as insurance discounts, safe driving points/credits, and demerit point reduction upon course completion. Check with your local AAA office or DMV to learn more about courses in your area.

State laws governing teen driver passenger limits vary, but the risk of teen drivers having a fatal crash nearly doubles with one passenger and increases with each additional passenger.

PARKING
MATTERS

ROAD RULES



AAA Mid-Atlantic, based in Wilmington, Del., serves nearly four million members in Delaware, Maryland, New Jersey, Pennsylvania, Virginia and the District of Columbia, with personal insurance, financial, automotive and travel services through 63 retail stores, regional operations centers and the Internet, at AAA.com.



The **Mid-Atlantic Foundation for Safety and Education**, affiliated with AAA Mid-Atlantic, is dedicated to educating, training and raising the level of traffic and travel safety awareness for all. Through generous contributions, the Foundation works to make schools, communities and roads a safer place for everyone by providing resources & education programs for children, teens, adults and seniors. midatlantic.aaa.com/outreach.



The **International Parking Institute** is the largest association of parking professionals and the parking industry in the world. There's a great deal more to the parking profession than parking enforcement or parking cars! The planning, design, management, and operation of parking places is integral to transportation and mobility, getting people from one point to another, and the development of livable, sustainable, walkable communities. Consider a career in parking! Learn more at parking.org.



Parking laws and regulations vary by state. The information in this manual is offered as a guideline. Please check your local Department of Motor Vehicles (DMV) for state-specific information.