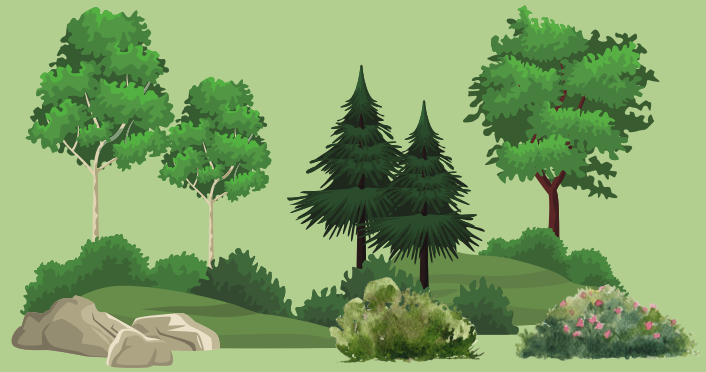


PLANT THIS NOT THAT



A guide to recommended trees, shrubs, and perennials to plant in Summit, NJ



PLANT THIS

Trees

These trees are especially adapted to our local soil, rainfall, wind, and temperature conditions, and are also widely available in our area. They are less susceptible to insect damage and other diseases, so they are expected to thrive in Summit with a minimal amount of maintenance.

- American Holly (not near streets)
- American Hornbeam
- Black Gum (great fall color)
- Common Persimmons
- Dogwood (provide lacey, dappled shade)
- Hackberry
- Hophornbeam
- Littleleaf Linden (fast growing and elegant)
- Redbud
- Red Maple (hardy, beauty and color)
- River Birch (single stem or clump)
- Serviceberry
- Sugar Maple (but not too close to the sidewalk)
- Swamp White Oak
- Sweet Bay Magnolia
- Western Red Cedar (Green Giant Arborvitae)
- White Oak
- Yellowwood

NOT THAT

Trees

These trees do not do well in our area because they are invasive, highly susceptible to disease, and/or are not native.

- Ash (borers)
- Austrian Pine
- Black Locust
- Flowering Pear
- Flowering Plum (Black Knot Disease)
- Hemlock (requires spraying)
- Mimosa (super-invasive)
- Mountain Ash (too far north)
- Norway Maple (super-invasive)
- Robinia pseudoacacia—Black locust
- Tree of Heaven (main host for Spotted Lanternfly)

PLANT THIS

Shrubs

Incorporating native plants into your landscaping plan can reduce maintenance and use of fertilizers and pesticides; transition the landscape to reflect the native plants of the region; provide habitat for certain native species to successfully reproduce; and provide a food source for native wildlife and insects. ***Deer resistant**

Shrub name	Latin name	Shrub name	Latin name
American beautyberry*	<i>Callicarpa americana</i>	Rosebay rhododendron	<i>Rhododendron maximum</i>
Arrowwood viburnum*	<i>Viburnum dentatum</i>	Spicebush	<i>Linden benzoin</i>
Hydrangea Annabelle*	<i>Hydrangea arborescens</i>	Spireas - gold mound, anthony waterer*	<i>Spirea japonica</i>
Inkberry holly*	<i>Ilex glabra</i>	Spireas - goldflame, lime mound*	<i>Spirea japonica</i>
Lilac Miss Kim*	<i>Syringa Miss Kim</i>	Spirea bridalwreath*	<i>Spirea vanhouttei</i>
Lilac cutleaf*	<i>Syringa laciniata</i>	Viburnum (Bracted) 'Emerald Lustre'*	<i>Viburnum bracteatum</i> 'Emerald Lustre'
Mountain laurel*	<i>Kalmia latifolia</i>	Viburnum Winterthur 'Winterthur'*	<i>Viburnum nudum</i>
Oakleaf Hydrangea 'Snowflake'*	<i>Hydrangea quercifolia</i> 'Snowflake'	Virginia Sweetpire*	<i>Itea virginica</i>
Pinkshell Azalea	<i>Rhododendron vaseyi</i>	Wineleaf Cinquefoil*	<i>Potentilla tridentata</i>
Plum Leaf Azalea	<i>Rhododendron prunifolium</i>	Winterberry 'Sparkleberry'*	<i>Ilex verticillata</i> 'Sparkleberry'
Red buckeye*	<i>Aesculus pavia</i>	Witchhazel*	<i>Hamamelis virginia</i>

PLANT THIS

Perennials

Plant name	Latin name	Plant name	Latin name
Aster 'Bluebird'*	<i>Symphyotrichum laeve</i> 'Bluebird'	Hellebore	<i>Helleborus orientalis hybridus cvs</i>
Aster Raydon's favorite*	<i>Symphyotrichum oblongifolium</i>	Japanese painted fern*	<i>Athyrium niponicum var. pictum</i>
Bee Balm*	<i>Monarda selections</i>	Lungwort*	<i>Pulmonaria spp.</i>
Black-eyed Susan*	<i>Rudbeckia hirta</i>	Maidenhair fern*	<i>Adiantum venustum</i>
Blue star	<i>Amsonia hubrichtii</i>	Mountain Mint*	<i>Pycnanthemum muticum</i>
Butterfly weed*	<i>Asclepias tuberosa</i>	Pink muhly grass*	<i>Muhlenbergia capillaris</i>
Canada Columbine	<i>Aquilegia canadensis</i>	Sea Holly*	<i>Eryngium planum</i>
Cardinal Flower	<i>Lobelia cardinalis</i>	Stonecrop autumn 'Autumn Charm'	<i>Sedum</i>
Catmint*	<i>Nepeta 'Walkers Low'</i>	Swamp milkweed*	<i>Asclepias incarnata</i>
Coneflower*	<i>Echinacea purpurea</i>	Swamp Rosemallow	<i>Hibiscus moscheutos</i>
Creeping Jacob's Ladder*	<i>Polemonium reptans</i>	Switchgrass	<i>Panicum virgatum</i>
Dense blazing star	<i>Liatris spicata</i>	Wavy hair grass	<i>Deschampsia flexuosa</i>
Douglas Iris 'Canyon Snow'*	<i>Iris douglasiana 'Canyon Snow'</i>	Wild ginger*	<i>Asarum canadense</i>
False Forget-Me-Not*	<i>Brunnera macrophylla</i>		
False Indigo (B.australis x B.alba)	<i>Baptisia x 'Purple Smoke'</i>		

NOT THAT

Shrubs and Perennials

This is a list of invasive plants that should NOT be included in your landscape plan. When invasive (non-native) species are introduced into an ecosystem in which they did not evolve, their populations can explode in numbers, outcompeting native species for resources and sometimes causing their extinction. Even if the native species are not completely eliminated, the ecosystem often becomes less diverse, making it more susceptible to disturbances such as diseases and natural disaster.

- *Ampelopsis glandulosa*—Porcelain berry
- *Aralia elata*—Japanese angelica tree
- Bamboo - All running Bamboo species
- *Berberis thunbergii*—Japanese barberry
- *Celastrus orbiculatus*—Asian bittersweet
- *Elaeagnus umbellata*—Autumn olive
- *Euonymus alatus*—Burning bush
- *Fallopia japonica*—Japanese knotweed
- *Lonicera japonica*—Japanese honeysuckle
- *Lonicera maackii*—Bush honeysuckle
- *Lythrum salicaria*—Purple loosestrife
- *Miscanthus sinensis*—Chinese silvergrass
- *Rhamnus cathartica*—Common buckthorn

RESOURCES

Summit residents can contact Reeves-Reed Arboretum for assistance with selecting trees for their home landscape. Call 908-273-8787 or email info@reeves-reedarboretum.org.

The City of Summit Shade Tree Advisory Committee provides more information on selecting the right tree for your property on the city website: <https://www.cityofsummit.org/DocumentCenter/Home/View/642>.

The [Rutgers Agricultural Station](https://njaes.rutgers.edu/deer-resistant-plants/) has an excellent list of native shrubs and perennials that includes soil type, sunlight requirements, height and growth, and other comments. There is an extensive list of deer resistant plants at <https://njaes.rutgers.edu/deer-resistant-plants/>.

A longer list of invasive species can be found at <https://www.invasive.org/eastern/midatlantic/indexsci.html>.

More information on New Jersey native plants is available from the Native Plant Society of NJ: www.npsnj.org.