



2025

425 E. Broad St.  
Westfield, NJ 07090

# Westfield Regional Health Department

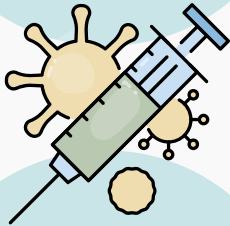
## Measles Advisory

### Protect Your Family Before Traveling



Contact your healthcare provider to help weigh the risk of measles exposure while traveling or in your local community.

#### Infants 6 to 11 months old



#### Why it Matters



#### Before You Travel

- The CDC recommends children 6–11 months receive the MMR vaccine before traveling internationally. This dose is in addition to the recommended two doses, not as a replacement dose.
- Measles spreads easily through coughing, sneezing, and airborne transmission.
- Measles can cause serious complications including pneumonia and encephalitis (inflammation of the brain).
- Unvaccinated individuals, including infants, are at high risk of infection.
- If you will be traveling internationally, or where an outbreak is occurring, talk to your pediatrician about whether your child should receive an early dose of MMR vaccine.

